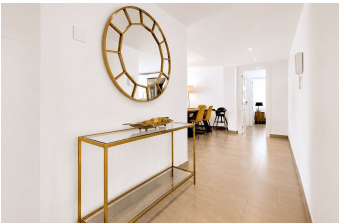


ALL IN

real estates



Ground Floor Apartment in Atalaya

Bedrooms **3**

Bathrooms **2**

Built **154m2**

Terrace **110m2**

R5402224

**Ground Floor
Apartment**

Atalaya

925.000€

This beautiful residential community wasn't designed as just another development project. It was created as a space for real life — for peace, for comfort, for children's laughter, for slow family breakfasts on the terrace and long evenings overlooking the beautiful gardens and the mountains. Here, you're not rushing through life — you're simply enjoying it. There's a well-regarded school, Atalaya Colegio Internacional, just a short walk away — ideal for families with kids. And just around the corner, you'll find a premium Mercadona supermarket, stocked with everything from fresh produce to prepared meals — perfect for busy family life. It isn't a noisy or crowded area. It's quiet, peaceful, full of clean air and greenery — a hidden corner of calm. The apartment itself is well suited for families as it is situated on the ground floor and includes a large private garden, that the present owner's family uses as a football pitch! The homes themselves are thoughtfully designed, with spacious layouts and wide terraces where kids can play, and you can relax, sunbathe, enjoy dinner outdoors or simply breathe in the beauty of the view. The community has the feeling of a botanical garden — palm trees, flowers, birds, even parrots flying overhead. It's green, serene, and the air is fresh and clean. You'll also find a private lake, multiple swimming pools for both adults and children, and a large spa area that invites you to unwind every day — not just on weekends. Love golf? The courses are right nearby. Craving the sea? The beach is just a few minutes away. Want to

shop or dine in Puerto Banús? You can get there in about 15 minutes, comfortably and calmly. Most importantly, this is a place for people who value comfort, nature, and peace of mind. It's not a holiday rental zone, not a tourist hotspot — it's a place to truly live, and live well.

Access for people with reduced mobility

Covered Terrace

Fiber Optic

Private Terrace

WiFi

Access for people with reduced mobility

Double Glazing

Fitted Wardrobes

Satellite TV

Barbeque

Ensuite Bathroom

Lift

Storage Room