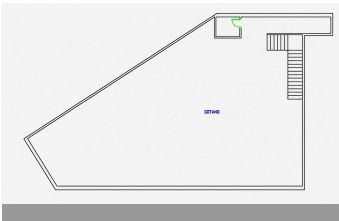


# ALL IN real estates



## Commercial Premises in Estepona

Bedrooms **0** Bathrooms **0** Built **460m2** Terrace **0m2**

**R5389870**

**Commercial  
Premises**

**Estepona**

**950.000€**

Commercial Premises for Sale or Rent in Atalaya Park, Estepona – New Golden Mile  
**RENTAL CONDITIONS: 1 MONTH FREE RENT INCLUDED. 12–24 MONTH RENT TO BUY OPTION AVAILABLE.** Excellent commercial property located in one of the most visible and accessible areas at Atalaya Park between Estepona and San Pedro. Positioned just off the A-7, this premises benefits from fantastic roadside visibility, easy access, and parking alongside making it an ideal location for a wide range of businesses. The area is well positioned between Estepona, San Pedro, Marbella, and Benahavís, with a strong mix of residential communities, passing traffic, and local businesses. The property offers a spacious main commercial area plus a basement level, providing excellent flexibility for storage, offices, staff areas, stock, or additional workspace. Thanks to its layout and location, it is perfectly suited for offices, a showroom, retail shop, gym, wellness centre, clinic, studio, or almost any commercial business looking for a high visibility location on the Costa del Sol.

Basement

Basement

Near Transport