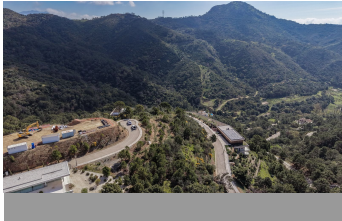


ALL IN

real estates



Residential Plot in Benahavís

Bedrooms **0** Bathrooms **0** Built **277m2** Plot **2775m2**

R5368084 **Residential Plot** **Benahavís** **850.000€**

Set within the prestigious hillside enclave of Monte Mayor, this outstanding plot represents one of the finest opportunities currently available in the area. With a generous size of 2,775 m², the plot enjoys a prime south-facing orientation, offering panoramic sea and mountain views that stretch across the natural landscape and down to the Mediterranean. Its elevated position ensures both privacy and uninterrupted vistas, making it ideal for a truly exceptional villa project. What sets this plot apart is its rare topography, unlike many plots in Monte Mayor, it is largely flat and fully walkable, allowing for a more straightforward build and more efficient use of space. This not only reduces construction complexity but also opens up greater flexibility in design. With a build allowance of 12.2%, you can construct a villa of approximately 277.55 m² (excluding terraces and basement), providing ample scope to create a luxurious home with expansive indoor and outdoor living areas. Located within a secure, gated community surrounded by protected nature, yet just a short drive from golf courses, beaches, and the amenities of Benahavís and Marbella, this is a rare chance to secure what is arguably one of the best plots in Monte Mayor. An exceptional setting for a bespoke home combining privacy, views, and ease of build, something seldom found in this unique area.

+34 952 939 460 · info@allinrealestates.com

Urbanización Playa Mijas 7, Mijas 29649, Málaga, España