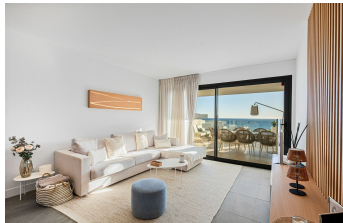
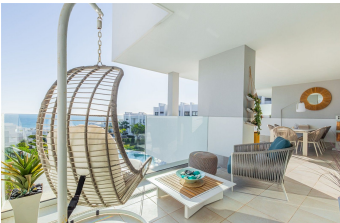


ALL IN

real estates



Middle Floor Apartment in Manilva

Bedrooms

2

Bathrooms

2

Built

93m2

Terrace

49m2

R5274895

**Middle Floor
Apartment**

Manilva

560.000€

Stunning South-Facing 2-Bedroom Apartment with Spacious Terrace and Panoramic Sea Views This bright and spacious 2-bedroom, 2-bathroom apartment is designed to maximize natural light and comfort. Its well-planned layout creates open, airy interiors that flow seamlessly onto a large terrace with stunning sea views, offering complete privacy perfect for relaxing or entertaining. This modern, key-ready property is just 3 years old and comes fully furnished. Finished to a high standard, the apartment features floor-to-ceiling windows with fitted mosquito nets, modular fitted wardrobes, and bathrooms with top-brand tiling, thermostatic showers, and quality fittings. The kitchen is fully fitted with floor-to-ceiling cabinetry, quartz worktops, and integrated appliances, including induction hob, oven, microwave, fridge, dishwasher, washing machine, and dryer. Centralised air conditioning and advanced acoustic and thermal insulation. Communal facilities include saltwater pools for adults and children, landscaped gardens, picnic areas, playgrounds, chill-out spaces, a fitness area, yoga and relaxation zones, solarium, leisure room, and secure access—perfect for a balanced Mediterranean lifestyle. Pure South Residences, a private hillside development in Manilva, offers panoramic Mediterranean views and spacious communal areas designed for outdoor living, relaxation, and well-being. The modern architecture features clean white volumes, stepped terraces, and expansive glazing, connecting

seamlessly with the natural surroundings. Located close to La Chullera and Sabinillas beaches, La Duquesa Marina, golf courses, supermarkets, and international airports such as Gibraltar, Pure South Residences offers contemporary coastal living with nature, comfort, and quality design on the western Costa del Sol.

Covered Terrace
Ensuite Bathroom
Gym
Marble Flooring
Storage Room

Covered Terrace
Fitted Wardrobes
Jacuzzi
Private Terrace

Double Glazing
Games Room
Lift
Sauna