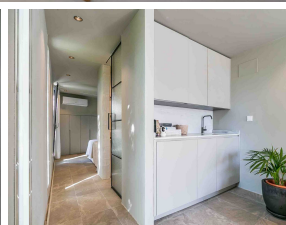
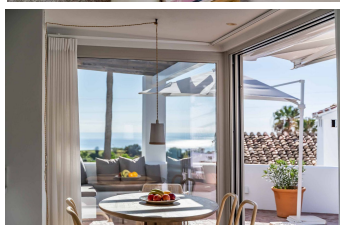
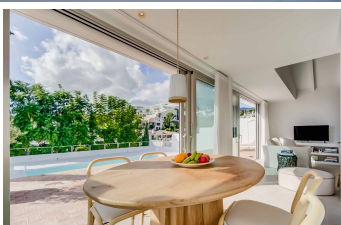


ALL IN

real estates



House in Benalmadena

Bedrooms

4

Bathrooms

3

Built

180m2

Plot

540m2

R5230216

House

Benalmadena

1.475.000€

Mediterranean Luxury with Independent Andalusian Guest House – La Capellanía, Benalmádena Welcome to this exceptional villa located in the prestigious area of La Capellanía, a peaceful yet perfectly connected residential enclave on the Costa del Sol. This 180 m² home sits on a beautifully maintained 540 m² plot and offers a harmonious blend of contemporary comfort, privacy and authentic Mediterranean charm. The main house features a bright and spacious living area with large windows and direct access to the sunny terrace, where you can enjoy uninterrupted sea views and the warm Andalusian light throughout the day. The modern, fully fitted kitchen is designed for both aesthetics and functionality, making it ideal for homeowners who enjoy cooking and entertaining. With 4 bedrooms and 4 bathrooms in total, the property provides outstanding comfort for families or those expecting regular visitors. One of the property's strongest assets is the independent Andalusian-style guest house nestled in the garden. This charming unit includes a bedroom, its own bathroom and a practical kitchenette – offering complete privacy and convenience for long-term guests, friends or family visiting from abroad. Outside, the villa provides a series of inviting relaxation areas, including a private swimming pool, sunbathing terraces, tropical palms and secluded lounge corners. Whether you're hosting dinner under the stars, relaxing with a book or spending time with loved ones, the outdoor environment is designed to be enjoyed year-round. Additional highlights include air conditioning (hot/cold), fireplace, fiber optic internet,

fitted wardrobes, double glazing, accessibility features, staff accommodation and ample private parking. With its prime location close to the sea, amenities and local transport, this property stands out as an excellent investment, a stylish permanent home or a luxurious second residence. Setting : Town, Suburban, Commercial Area, Close To Sea, Close To Town, Urbanisation. Orientation : South West. Condition : Good, Recently Renovated. Pool : Private. Climate Control : Air Conditioning, Pre Installed A/C, Hot A/C, Cold A/C, Fireplace. Views : Sea, Garden, Pool. Features : Covered Terrace, Fitted Wardrobes, Private Terrace, WiFi, Guest House, Ensuite Bathroom, Access for people with reduced mobility, Barbeque, Double Glazing, Staff Accommodation, Fiber Optic. Furniture : Optional. Kitchen : Fully Fitted. Garden : Private, Easy Maintenance. Parking : Open, More Than One, Private. Utilities : Electricity, Drinkable Water, Telephone. Category : Investment, Luxury, Resale, Contemporary.

Access for people with reduced mobility	Access for people with reduced mobility	Barbeque
Covered Terrace	Double Glazing	Ensuite Bathroom
Fiber Optic	Fitted Wardrobes	Guest House
Private Terrace	Staff Accommodation	WiFi