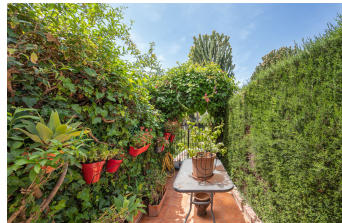
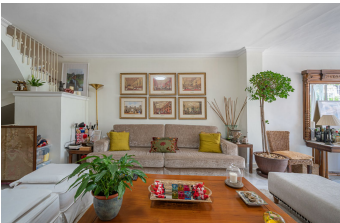


ALL IN

real estates



Townhouse in The Golden Mile

Bedrooms **3** Bathrooms **3** Built **184m2** Plot **0m2**

R5222767 **Townhouse** **The Golden Mile** **680.000€**

Montepiedra is one of the most sought-after gated communities in Naguales on the Golden Mile. With Mediterranean village architecture featuring white terraced houses, balconies, terraces and typical tiled roofs. The community maintains its cobbled streets, its native gardens with mature vegetation and its community swimming pools in perfect condition. The select neighbourhood coexists in harmony and respect for the rules of coexistence. The townhouse is built on two floors plus a basement, finished with quality materials, high ceilings, wood and aluminium carpentry, among others. On the main floor is the spacious and bright living room with a fireplace, TV area, lounge and dining room. It has direct access to the open terrace which leads to the communal areas and the swimming pool. The kitchen is fully fitted, very elegant and equipped with high-end appliances. There is a guest toilet on this floor. On the first floor, the master bedroom is en-suite with fitted wardrobes and a large private terrace, facing south with sea views. The other bedroom is also en-suite and faces north with a balcony to enjoy the mountain views. The top floor is occupied by a loft bedroom en-suite with a private terrace and sea views. The basement has natural light and has been recently renovated with elegant finishes, a large living room, a wonderful dressing room for storing seasonal clothing, a bathroom, laundry area and pantry. As a final touch, let's talk about the excellent location, a short distance from the city centre, Puerto Banús and the Puente Romano hotel, with all kinds of quality restaurants. Access to the motorway.

The best international schools on the coast are located nearby, as well as renowned golf courses. The development has a public transport stop.

Basement
Double Glazing
Marble Flooring
Storage Room

Basement
Ensuite Bathroom
Near Transport

Covered Terrace
Fitted Wardrobes
Private Terrace