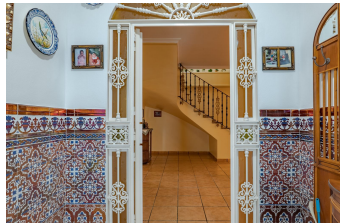


# ALL IN

## real estates



### House in Alhaurín el Grande

Bedrooms **8** Bathrooms **5** Built **556m<sup>2</sup>** Plot **6330m<sup>2</sup>**  
**R5221825** **House** **Alhaurín el Grande** **1.195.000€**

This is a fantastic opportunity to become the owner of not one, but two charming Andalusian-style villas, situated on a generous plot of 6,630 m<sup>2</sup> within walking distance of the village of Villafranco del Guadalhorce. Upon arrival via the private driveway, you are welcomed by the first property: \* ?Villa 1 (377 m<sup>2</sup>): A spacious two-storey property. This elegant villa features a bright open-plan living and dining room, an open-plan kitchen, four spacious bedrooms, three bathrooms and an indoor garage. The many covered terraces, surrounded by lush tropical vegetation, create peaceful relaxation areas and the private swimming pool. From the roof terrace, you can enjoy also a panoramic view of the surrounding area. \* ?Villa 2 (177 m<sup>2</sup>): This villa offers a warm and cosy atmosphere with a open plan living-dining room with fireplace, a spacious kitchen. Four bedrooms and two bathrooms. The plot is beautifully maintained and planted with avocado, olive and citrus trees, creating an authentic Andalusian atmosphere. There is also plenty of space for farming or keeping animals, making this location ideal for equestrian enthusiasts or those with agricultural interests. The location is excellent: •? ?The village with amenities is within walking distance. •? Alhaurín el Grande & Coin are 10 minutes away by car. •? ?Málaga city, the airport and the beaches are only 30 minutes away by car. The versatility of these two villas makes them suitable for various purposes: Spacious family home (ideal for multiple generations). Starting a bed and breakfast or renting out one of the villas. Detached Villa, Alhaurín el Grande, Costa del Sol. 8

Bedrooms, 5 Bathrooms, Built 556 m<sup>2</sup>, Garden/Plot 6330 m<sup>2</sup>. Setting : Close To Golf, Close To Shops, Close To Town, Close To Schools. Orientation : East, South. Condition : Excellent. Pool : Private. Climate Control : Air Conditioning, Fireplace. Views : Country, Panoramic, Garden, Pool. Features : Fitted Wardrobes, Near Transport, Private Terrace, Guest House, Storage Room, Ensuite Bathroom, Double Glazing. Furniture : Optional. Kitchen : Fully Fitted. Garden : Private. Security : Safe. Parking : More Than One, Private. Utilities : Electricity, Drinkable Water. Category : Resale.

Double Glazing  
Fitted Wardrobes  
Private Terrace

Double Glazing  
Guest House  
Storage Room

Ensuite Bathroom  
Near Transport