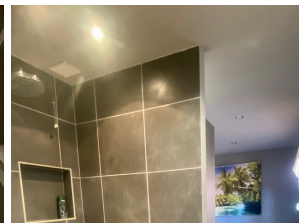
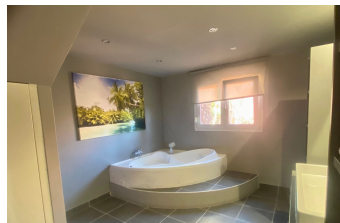
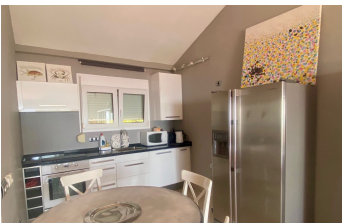


# ALL IN

## real estates



### Duplex in La Mairena

Bedrooms

**2**

Bathrooms

**1**

Built

**110m2**

Terrace

**0m2**

**R5169244**

**Duplex**

**La Mairena**

**287.000€**

110 m<sup>2</sup> Duplex Apartment with Panoramic Views in a Quiet, Private Community This stunning 110 square meter duplex apartment offers a spacious and versatile living area that combines comfort, elegance, and well-being in every corner. Originally designed as a two-bedroom duplex, this apartment has been tastefully transformed by the current owners into an exceptionally spacious and bright one-bedroom residence. The open-plan layout enhances the sense of space and light, creating a comfortable and inviting atmosphere. There is also the possibility to easily reconvert it to its original two-bedroom layout, offering great flexibility to adapt the property to individual needs and preferences. Inspiring Views Enjoy unparalleled panoramic views that flood each room with natural light, creating a sense of freedom and spaciousness that is hard to find. Waking up to this view every day will truly be a privilege. A Layout Designed for Your Comfort • A dream bathroom: spacious and bright, featuring a corner bathtub perfect for relaxation and a separate shower for everyday convenience. • A separate laundry room that adds functionality and organization, ideal for keeping your home always tidy. • Open and versatile spaces where you can create inviting areas: bedrooms, a home office, a leisure or reading area. A Quiet and Safe Environment Located within a gated community, this duplex offers the peace and privacy you deserve, in a serene and well-maintained setting, perfect for relaxing and escaping the hustle and bustle of city life. Amenities That Make a Difference The complex includes secure parking within the gated

area, guaranteeing safety and convenience. Furthermore, the apartment is fully equipped and ready to become your new home. A unique, spacious home full of potential, where tranquility, natural light, and panoramic views combine with a practical and elegant design.

Double Glazing  
Private Terrace  
WiFi

Double Glazing  
Satellite TV

Fitted Wardrobes  
Utility Room