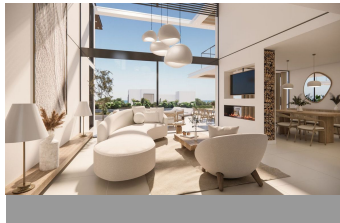


# ALL IN

## real estates



## House in Benalmadena

Bedrooms

**5**

Bathrooms

**6**

Built

**356m2**

Plot

**621m2**

**R5032771**

**House**

**Benalmadena**

**2.200.000€**

New Development: Prices from €2,200,000 to €2,200,000. [Bedrooms: 5] [Bathrooms: 6] [Built size: 356m2]. Experience the perfect blend of luxury and tranquility with this magnificent Villa in Prime location as your possible new home, or holiday home! This contemporary villa stands out for its architectural design that reflects a game of volumes with a contemporary, Mediterranean and elegant aesthetic, offering relaxation and comfort, inviting to immerse in unique lifestyle. Provides a lifestyle that is linked to the environment, giving centre stage to the outdoor spaces and the superb views of the endless Mediterranean Sea! The main terrace includes a sunken lounge with fireplace, a large outdoor dining area and another lounge which is covered by a wooden pergola that creates a mesmerising play of light and shade, a magnificent pool, that makes every day feel like a vacation. An open and bright architectural design blurs the boundaries between indoors and outdoors combining sophistication and luxury with the charm of the Mediterranean coastline. The earthy tones unify the house with its natural surroundings! The choice of noble and durable materials gives the Villa an authentic and comfortable atmosphere, creating a truly unique setting. Wood, found both inside and out, gives a rustic and welcoming touch. In the interiors, materials such as marble and stone in soft and light tones stand out. Option to buy with the full furniture package as well! • Compelling Description: - Highlight luxury - Sea views throughout the villa - 4 / 5 bedrooms. You have the option to choose, before the construction

begins. Each with terraces and sea or mountain views , from some the Stupa is visible as well - 6 bathrooms - 3 car spacious garage - Indoor spa with sauna and a large jacuzzi - Home Cinema room to fully enjoy your movies every single day of the year - Elevator for easily uniting spaces - Large storage room - Home gym to conveniently master your fitness day by day - 365 m² living space, - 621 m² plot

Access for people with reduced mobility

Basement

Ensuite Bathroom

Gym

Near Transport

Solarium

WiFi

Access for people with reduced mobility

Covered Terrace

Fiber Optic

Jacuzzi

Private Terrace

Storage Room

Wood Flooring

Barbeque

Double Glazing

Fitted Wardrobes

Lift

Sauna

Utility Room