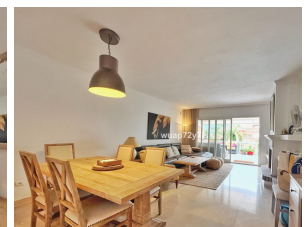


ALL IN real estates



Middle Floor Apartment in Costalita

Bedrooms **2** Bathrooms **2** Built **100m2** Terrace **50m2**

R5121478

**Middle Floor
Apartment**

Costalita

469.000€

Park Beach – 2 Bed | 2 Bath | Roof Terrace | €549,000 Welcome to this bright and inviting 2-bedroom, 2-bathroom apartment located in the exclusive Park Beach community, ideally nestled between the vibrant towns of Marbella and Estepona. This spacious home features a modern open-plan kitchen that flows into a large, elegant living room with direct access to a sunny private balcony—perfect for morning coffee or evening relaxation. The kitchen comes fully equipped and is ideal for preparing meals and entertaining guests. A true highlight of this property is the impressive roof terrace (solarium) offering panoramic views and all-day sunshine. Whether you’re dining under the stars, lounging in the sun, or enjoying the sea breeze, this rooftop oasis is a perfect outdoor retreat. Additionally, the home includes a second large terrace, expanding your outdoor living space even further. Community & Area Highlights: Located just a short stroll from the beach, Park Beach is a well-maintained, quiet residential community known for its tranquility and lush surroundings. Residents enjoy access to two beautiful communal swimming pools, night-time security, and peaceful, landscaped pathways. The area offers a true sense of privacy and relaxation while still being connected to everything you need. Park Beach is just minutes from a wide range of local amenities, including supermarkets, restaurants, beach clubs, golf courses, and international schools. Its strategic location between Marbella and Estepona offers easy access to both towns, as well

as nearby attractions like Puerto Banús and the new Laguna Village development. Whether you're seeking a full-time residence, a holiday getaway, or a smart investment, this property offers the perfect blend of location, comfort, and lifestyle.

Covered Terrace
Marble Flooring
Utility Room

Covered Terrace
Private Terrace

Lift
Solarium