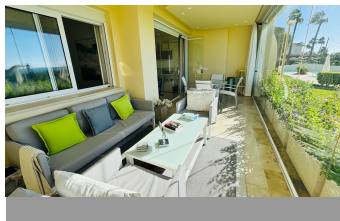
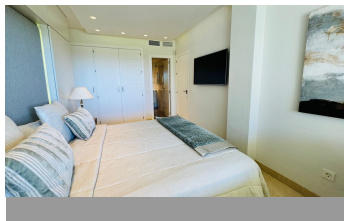
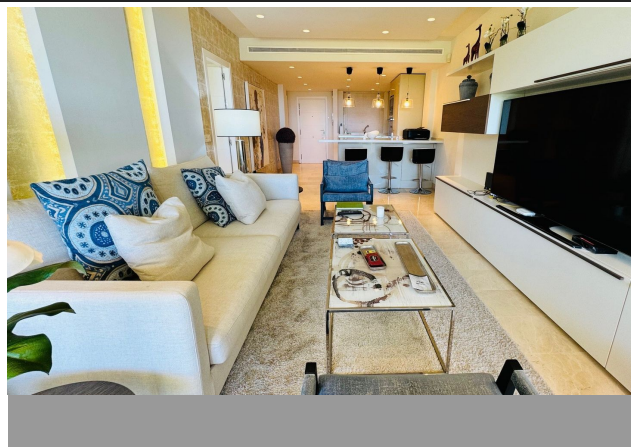


ALL IN

real estates



Ground Floor Apartment in Elvira

Bedrooms

2

Bathrooms

2

Built

75m2

Terrace

20m2

R4867849

**Ground Floor
Apartment**

Elvira

890.000€

Reduced Frontline beach apartment for sale in Elvira, Marbella. Rare opportunity to acquire a frontline beach property in the very exclusive area of Elvira located 15m drive from Marbella. This 2 bedroom 2 bathroom ground floor apartment is totally renovated modern style and is sold fully furnished. The contemporary open plan kitchen opens to the living room which leads to a covered terrace, equipped with glass curtains which can be opened when needed. The property is very bright and is part of a small very exclusive complexe of 14 apartments only, where all have stunning sea views. It is equipped with double glazing windows and electric blinds, Air conditioning Hot and Cold. The apartment has a private garden included in the title deeds and a private covered parking space. The community garden of 2400m has direct access to the beach. The size of the plot is exceptional for only 14 apartments. The beautifully designed pool, and gardens are all very well maintained. You are allowed to rent short term in this complexe, making the property a great little earner, perfect for an investor. The residence is located walking distance to famous beach clubs such as the Marriott, Nicky beach and the five stars Don Carlos Hotel. You can reach in a few minutes walk the several commercial centers of the Elvira area. Elvira is an upmarket area, very popular with Golf lovers for its reknowned Santa Maria Golf course, surrounded by green wooded protected forests. For those who dream of lounging in their own garden with the sea only a few meters

away, this is the Dream! Don't miss it, as it is a rare find.

Access for people with reduced mobility

Double Glazing

Lift

Private Terrace

Access for people with reduced mobility

Ensuite Bathroom

Marble Flooring

Covered Terrace

Fitted Wardrobes

Near Transport