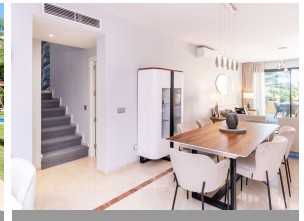
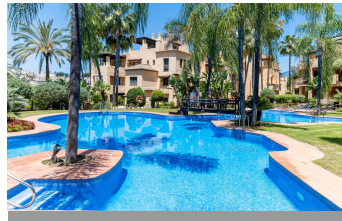


ALL IN

real estates



Penthouse Duplex in Atalaya

Bedrooms **3** Bathrooms **3** Built **185m²** Terrace **125m²**

R5054803 **Penthouse Duplex** **Atalaya** **950.000€**

EXCLUSIVE LISTING | Luxury Designer Penthouse in Prestigious El Campanario Welcome to one of the finest penthouses within the exclusive gated community of El Campanario — a spectacular south-facing residence where luxury, design, and lifestyle combine effortlessly. Completely renovated to an exceptional standard, this stunning penthouse offers sophisticated contemporary living with elegant open-plan interiors, soaring natural light, and exceptional outdoor entertaining spaces designed for the ultimate Costa del Sol lifestyle. From the moment you enter, the attention to detail is undeniable. The beautifully redesigned living space flows seamlessly from the sleek designer kitchen into the spacious dining and lounge area, all opening onto a sun-drenched south-facing terrace overlooking tropical gardens and resort-style pools. The main level features two generous guest bedrooms with excellent storage, including a stylish en-suite guest suite alongside a further luxury bathroom. Ascending to the upper level, the spectacular principal suite delivers true boutique-hotel luxury. Featuring vaulted ceilings, double-aspect terrace doors flooding the room with light, a walk-in wardrobe, and a stunning spa-inspired bathroom complete with freestanding bathtub and walk-in shower, this private retreat is simply exceptional. The rooftop terrace is where this penthouse truly sets itself apart. Designed for entertaining and relaxation, this extraordinary space features a fully equipped outdoor kitchen and BBQ area, private sauna, state-of-the-art Jacuzzi, and panoramic open views that create an atmosphere worthy of a

luxury resort. Whether entertaining guests at sunset or enjoying peaceful mornings in the sun, this rooftop experience is genuinely unforgettable. Additional features include: • Two underground parking spaces • Two private storage rooms • Multiple swimming pools including children's pools • Tropical landscaped gardens • Secure gated community Perfectly positioned directly opposite El Campanario Golf & Country Club, residents enjoy immediate access to golf, tennis, spa facilities, gym, and fine dining. The beaches, Guadalmina, San Pedro, Puerto Banús, and Marbella are all just a short drive away, while restaurants, cafés, and amenities can easily be reached on foot. This is far more than a penthouse — it is a statement property offering luxury living, exceptional entertaining space, and one of the most desirable lifestyles on the New Golden Mile. A truly must-see residence.

Access for people with reduced mobility
Covered Terrace
Fiber Optic
Lift
Private Terrace
Solarium
WiFi

Access for people with reduced mobility
Double Glazing
Fitted Wardrobes
Marble Flooring
Satellite TV
Storage Room

Barbeque
Ensuite Bathroom
Jacuzzi
Near Transport
Sauna
Utility Room