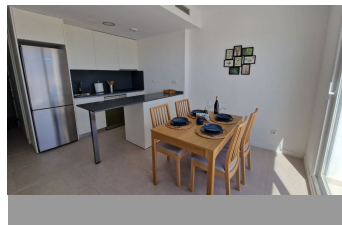
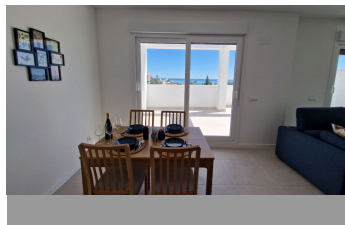
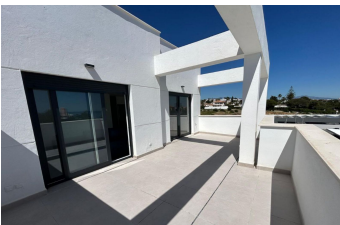


# ALL IN

real estates



## Penthouse in Estepona

Bedrooms **2** Bathrooms **2** Built **76m2** Terrace **26m2**  
**R5002348** **Penthouse** **Estepona** **595.000€**

Welcome to this stunning corner penthouse in the exclusive “Sea Views” by Via Célere, a brand-new development in the sought-after area of Estepona West. This 2-bedroom, 2-bathroom residence offers an unparalleled coastal lifestyle, boasting breathtaking panoramic sea views from its elevated position. Step inside to discover a light-filled open-plan living space, where floor-to-ceiling windows frame the endless blue of the Mediterranean. The apartment has been tastefully furnished with brand-new, high-quality pieces, ensuring a sophisticated and stylish ambiance. Every detail has been carefully curated to provide both comfort and elegance, and as this home has never been lived in, you will be the very first to enjoy its pristine condition. The master suite features its own en-suite bathroom and built-in wardrobes. The second bedroom is equally well-appointed, perfect for guests or a home office. Both bathrooms are finished with premium materials. The highlight of this penthouse is its expansive private terrace, where you can relax, dine, and soak in the spectacular sunset views over the sea. Whether enjoying your morning coffee or entertaining under the stars, this outdoor space is designed for unforgettable moments. Located in a contemporary, high-end community, “Sea Views” offers luxury amenities, including a swimming pool, landscaped gardens, a fitness center, and social areas. Just minutes from the beach, golf courses, and the charming town of Estepona, this is a rare opportunity to experience brand-new coastal living at its finest. A true gem on the Costa del Sol—ready for you to move in and make it

your own!

Access for people with reduced mobility

Double Glazing

Gym

Private Terrace

Access for people with reduced mobility

Ensuite Bathroom

Lift

Storage Room

Barbeque

Fitted Wardrobes

Near Transport

Utility Room