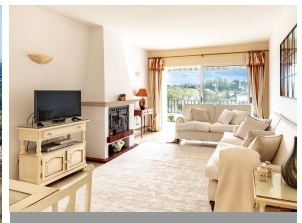
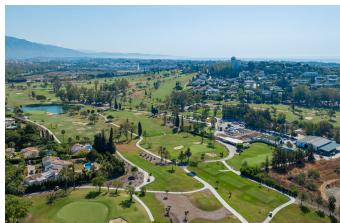
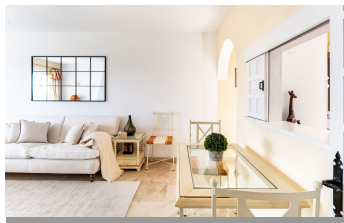
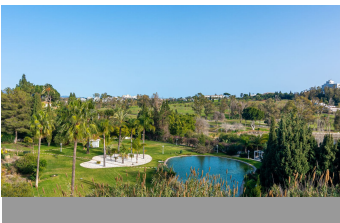


ALL IN

real estates



Penthouse in El Paraiso

Bedrooms **2** Bathrooms **2** Built **70m2** Terrace **14m2**
R4969852 **Penthouse** **El Paraiso** **329.000€**

South facing panoramic view First Line Golf, La Concha and Sea view one level Penthouse, enviably positioned within a prestigious Benahavis golf and residential community. The community is consistently chosen by industry professionals as a top recommended golf and residential choice, and is designed within outstanding tropical gardens offering direct golf buggy access onto the famous El Paraiso 18 hole golf course green. From within the exquisite Andalucian gardens of the community a private winding staircase accesses the entrance which opens into a white wood carpentry traditional kitchen with an open hatch situated on front of the lounge offering truly spectacular elevated views of the golf course greens, La Concha and a spectacular cascading fountain within the lake of the golf course. The flooring is complimented with high polished luxury cream marble flooring with silk and wool rugs in the lounge creating an infinity appeal throughout. The spacious master bedroom suite offers spectacular views of the golf lake and golf greens from its Juliette balcony sliding picture windows with an adjacent retro style bathroom. A further ensuite double guest bedroom offers views to the colourful Andalucian gardens of the community. The resident's swimming pool and garden areas are open all year round for swimming and relaxation and offer spectacular mirage views onto the El Paraiso golf course green, Andalucian tiling and garden features exquisitely decorate the community pathways with multi colourful bougainvillea throughout. White aluminium picture windows with custom made sliding

mosquito blinds throughout all areas. Air-conditioning Units installed throughout Purpose built integrated utility closet installed at the entrance. Unpolished Non Slip Marble Terrace flooring Original Andalucian fireplace feature Double sliding protection window installed to the lounge terrace facing La Concha for maximum sun protection and comfort Andalucian security railings to the windows Excellent opportunity to acquire a one level Penthouse in El Paraiso Cortes Del Golf offering astonishing Golf Course, Sea and La Concha Views High Rental Investment Return Potential Perfect for golfers or families. Suitable for all year round living or for vacation usage El Paraiso Golf Club House offers a Restaurant and Bar overlooking the Golf course green is open all year round. 6 Minutes drive to the Exquisite Beaches and Paseo of Costalita, Villa Padierna Club Del Mar & Tennis Club, and to Bel Air Commercial Centre offering essential services and an excellent choice of restaurants A short drive to Estepona, Marbella, The Golden Mile and to Puerto Banus. 24 hour Area Roaming Security at the entrance to El Paraiso Alto Benahavis All furniture as seen is included with the property Furniture Included Viewing is Highly Recommended

Covered Terrace
Ensuite Bathroom
Marble Flooring
Solarium
WiFi

Covered Terrace
Fiber Optic
Near Transport
Storage Room

Double Glazing
Fitted Wardrobes
Private Terrace
Utility Room