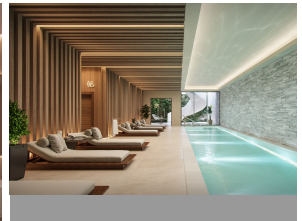
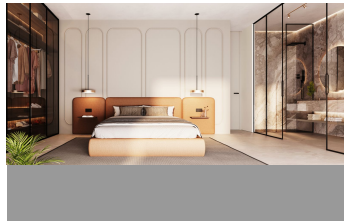


ALL IN

real estates



Ground Floor Apartment in San Pedro de Alcántara

Bedrooms

2

Bathrooms

2

Built

97m2

Terrace

11m2

R4970902

**Ground Floor
Apartment**

**San Pedro de
Alcántara**

610.000€

New Development: Prices from €610,000 to €1,525,000. [Bedrooms: 2 - 4] [Bathrooms: 2 - 3] [Built size: 97m2 - 201m2]. We present you with a new standard in lifestyle in our unbeatable new project, carefully designed to bring you the best in comfort, functionality, and location. At this development, we have fused the practical with the functional to offer you a unique living experience. The development is strategically located in the heart of San Pedro, ensuring that everything you need is just a few steps away—from supermarkets and stores to pharmacies and medical services, as well as one of the best tennis and paddle tennis clubs in the area, golf courses, restaurants, and beach clubs. The apartments will be built with top materials and qualities throughout, featuring open-plan living areas bathed in natural light. Ranging from 2 to 4 bedrooms, including apartments and penthouses, with spacious interiors of up to 195 m² and fabulous terraces of up to 189 m², each residence is a testament to contemporary design and elegance. All properties will include at least one parking space and a storage room in the price, and every apartment is customizable to suit the buyer's preferences. Our communal areas are no less impressive—immerse yourself in state-of-the-art facilities such as a dedicated coworking space for the modern professional, EV charging points for the environmentally conscious, an indoor heated swimming pool, and a fully equipped gym and spa. The complex will be fully gated, with a secure entrance and controlled access. In short,

the development stands out as the best project in the area due to its unique and avant-garde design that seamlessly combines aesthetics and functionality. Join us and experience a new level of unbeatable living!

Covered Terrace
Fitted Wardrobes
Near Transport
Storage Room

Covered Terrace
Gym
Private Terrace

Double Glazing
Lift
Solarium