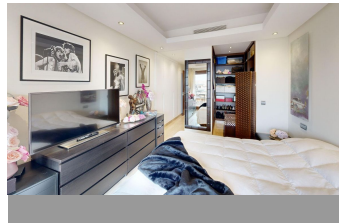
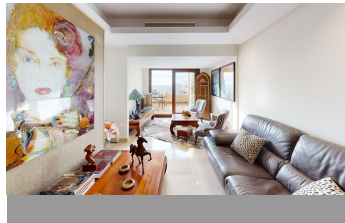
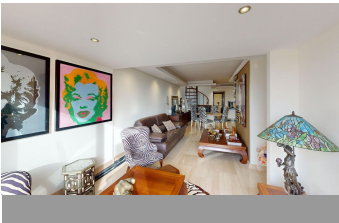


# ALL IN

real estates



## Penthouse in Estepona

Bedrooms **3**

Bathrooms **3**

Built **148m<sup>2</sup>**

Terrace **131m<sup>2</sup>**

**R4782814**

**Penthouse**

**Estepona**

**849.000€**

This stunning duplex penthouse is located in the prestigious Bahia de la Plata complex in Estepona, situated on the front line beach, with direct access to the beach and its promenade. The total built area is 279 m<sup>2</sup>, with an interior space of 148 m<sup>2</sup> and a terrace of 38 m<sup>2</sup>. The apartment features a rooftop terrace with a private pool, providing a unique space for comfortable living. The property includes an ample living area, a fully fitted and equipped separate kitchen, 3 bedrooms, and 3 bathrooms. Built with high-quality materials, this property features marble floors with underfloor heating and a domotic system. The mirrored and marble walls and glass sink of the bathrooms, as well as the glossy kitchen in beige tones, add a touch of elegance to the design of the space. The first floor of the penthouse boasts 2 bedrooms with a shared bathroom and a terrace with beautiful views of the sea. The apartment also features a garage and a storage room included in the price. The Bahia de la Plata complex has elevator facilities and offers a range of amenities for residents to enjoy, including illuminated tropical gardens and 2 outdoor swimming pools for adults and children, a heated indoor pool, indoor gym, spa, covered paddle court, and indoor space for social activities. The gated community provides a sense of security, with a 24-hour security service. The location is truly exceptional, with direct access to the beach and walking distance to amenities, restaurants, transport links, Kempinski Hotel, and the upcoming Pacha luxury tourist complex. The beachside promenade leads to Estepona center in just a 15-minute

walk. Additionally, the property is conveniently located for easy access to the centers of Estepona, Marbella, and Puerto Banús.

Double Glazing  
Lift  
Private Terrace  
Tennis Court

Double Glazing  
Marble Flooring  
Solarium

Jacuzzi  
Near Transport  
Storage Room