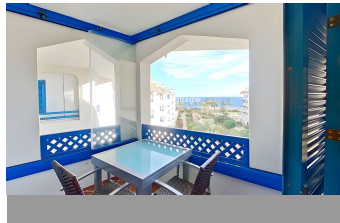
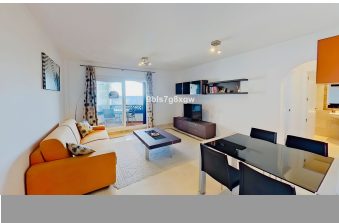


ALL IN real estates



Middle Floor Apartment in San Luis de Sabinillas

Bedrooms **1** Bathrooms **1** Built **63m2** Terrace **8m2**

R4902586

**Middle Floor
Apartment**

**San Luis de
Sabinillas**

220.000€

Beachfront Opportunity with Frontal Sea Views: Spacious 1bed 1bath Apartment with Terrace in La Noria IV. Garage Included! This apartment features a bright and spacious living room with sliding doors opening onto the terrace, a fully equipped independent kitchen, an utility room, a generously sized bedroom with built-in wardrobes, and a well-appointed bathroom. The moment you step into this apartment, the Sea View greets you, bringing a touch of charm to your everyday life. This captivating view can be enjoyed from the living room, the bedroom, and, of course, the terrace. The terrace is fitted with Lumon curtain glass, allowing you to make the most of it year-round. The property offers marble floors, double-glazed windows, shutters, armoured door, and a private parking space in the secure and video-surveilled underground garage. The residence itself is impeccably maintained and offers 24/7 security, a swimming pool, a children's pool, two paddle courts, a playground, and beautifully landscaped gardens. Its location is truly exceptional: - Direct access to the promenade and the stunning beach of Bahía de Casares. - Nestled in the vibrant village of San Luis de Sabinillas, with shops, restaurants, supermarkets, public transport and all amenities within walking distance. - Adjacent to the town's sports complex, which offers tennis and paddle courts, a heated swimming pool, a sauna, a spa, a gym, and more. Whether you're looking for a permanent residence, a fantastic holiday getaway, or an investment property with

excellent rental potential, this apartment ticks all the boxes. Beachfront properties like this are rare and can deliver outstanding returns. A MUST-SEE! Don't miss this incredible opportunity!

Covered Terrace
Fiber Optic
Marble Flooring
Private Terrace

Covered Terrace
Fitted Wardrobes
Near Transport
Utility Room

Double Glazing
Lift
Paddle Tennis