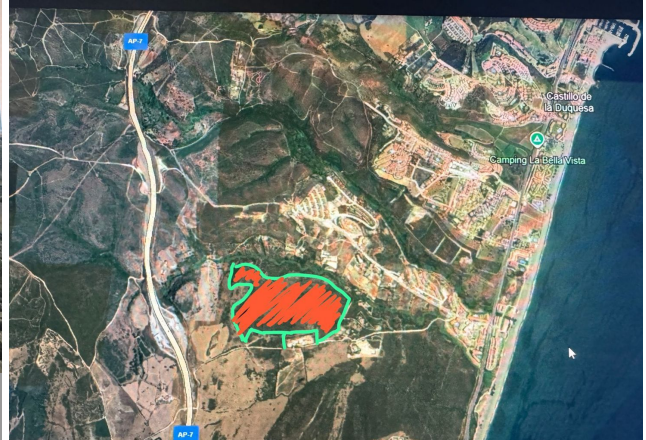


ALL IN

real estates



Plot in Manilva

Bedrooms	0	Bathrooms	0	Built	0m2	Plot	336431m2
R4870576		Plot		Manilva		10.200.000€	

An exceptional estate for sale in Martagina, Manilva, located just minutes from Sotogrande. This large plot boasts a prime location with sweeping views of the Mediterranean Sea. Set on a spacious plot, this property is ideally suited for large-scale educational, healthcare, sports, leisure, and other developments—an outstanding investment opportunity in a highly desirable area brimming with potential. Strategically positioned near Sotogrande, this estate offers easy access to major routes and amenities while providing a tranquil, scenic setting. Its proximity to the Mediterranean ensures stunning sea views and a serene natural backdrop, blending convenience with relaxation. Perfect for Large-Scale Projects: Spanning 34.2 hectares, this expansive and adaptable property is perfect for a variety of projects. From educational institutions to healthcare complexes, premier sports facilities, or leisure and entertainment hubs, the opportunities are vast. Its prime location and breathtaking views make it an ideal foundation for visionary developments.