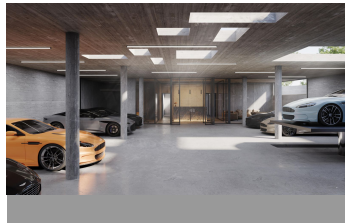


ALL IN real estates



Residential Plot in Marbella

Bedrooms	0	Bathrooms	0	Built	0m2	Plot	1370m2
R4779067		Residential Plot		Marbella		1.290.000€	

We present an exceptional plot located in the prestigious area of Nagüeles, Marbella, with an approved project and building permit for the construction of an impressive contemporary luxury villa. Plot and Project Features: Land: The plot spans 1,370 square meters, providing ample space for construction and landscape design. Built Area: The projected villa offers 650 square meters of built area, intelligently distributed across three levels to maximize comfort and functionality. Bedrooms: The villa will feature 6 spacious and luxurious bedrooms, each designed with attention to detail to offer a comfortable and private environment. Bathrooms: The project includes 8 elegant bathrooms, equipped with the highest standards of quality and modern design. Parking: The property includes a spacious parking area with capacity for more than 9 cars, ideal for large families or owners with multiple vehicles. Design and Style: Contemporary Design: The villa boasts a contemporary and modern architectural design, with clean lines, large windows, and a harmonious integration of indoor and outdoor spaces. High-Quality Finishes: The project plans to use top-quality materials and luxury finishes, ensuring a sophisticated aesthetic and exceptional durability. Location: Nagüeles, Marbella: Located in one of Marbella's most exclusive areas, Nagüeles offers a tranquil and secure environment, surrounded by nature and with easy access to all amenities and services. The location is ideal for those seeking a luxurious lifestyle close to Marbella's center and its famous beaches. This plot with a project and building permit is a unique opportunity to build the villa

of your dreams in one of the most sought-after areas of the Costa del Sol. Do not hesitate to contact us for more information and to schedule a visit. The abbreviated information document is available to you. Expenses: Taxes (ITP or VAT+AJD) + Notarial and registration expenses ERE

Wood Flooring

Wood Flooring