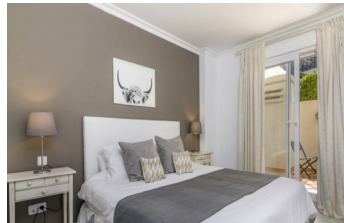


# ALL IN real estates



## Middle Floor Apartment in Aloha

Bedrooms **3** Bathrooms **4** Built **130m2** Terrace **59m2**

**R4686340**

**Middle Floor  
Apartment**

**Aloha**

**550.000€**

EXCELLENT DUPLEX GROUND FLOOR IN UNBEATABLE LOCATION IMPORTANT INFO: Rented by the owner's family for the winter period, can be sold. Contact us for more info. Are you looking for a property for sale with an ideal location? Imagine being able to walk to all amenities from your doorstep! Tastefully presented and an ideal family apartment, we introduce you to this unit in Señorío de Aloha. This is a popular residential development as it has walking distance to everything including Puerto Banus and the beaches. This is a ground floor duplex unit. Inside the property there is a fitted kitchen, nice lounge area with cozy fireplace and connected dining area, direct access to a beautiful terrace with dining and lounge area. The private residential development has tropical gardens, three swimming pools, two children pools and a paddle tennis court. This is a very well loved urbanisation for holiday makers and there are also quite a few people renting the whole year round. This is because of its central location and no need for a car which attracts people. It is centrally located within Nueva Andalucía. Just opposite the complex you have several everyday amenities such a large supermarket and also several restaurants to choose from. A very short walk takes you to Centro Plaza which has a larger selection of dining options, a popular gym, shops, banks etc. For golf fans, there are all the popular courses of the Golf Valley

Covered Terrace  
Ensuite Bathroom  
Marble Flooring  
Storage Room

Covered Terrace  
Fiber Optic  
Near Transport  
Tennis Court

Double Glazing  
Lift  
Private Terrace  
WiFi