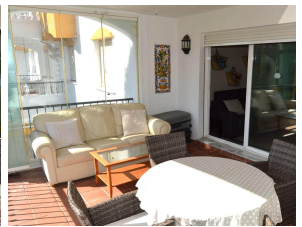
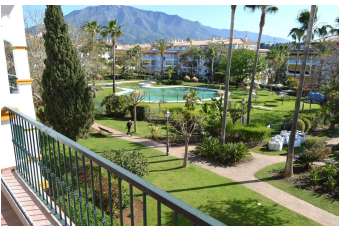


ALL IN

real estates



Middle Floor Apartment in Puerto Banús

Bedrooms **2**

Bathrooms **2**

Built **93m2**

Terrace **21m2**

R4700695

**Middle Floor
Apartment**

Puerto Banús

375.000€

New to the market, a fantastic 2 bed, 2 bath apartment in the popular Dama de Noche, walking distance to the famous Puerto Banus where you will find the best bars, restaurants and designer stores. The apartment faces the pool and garden and has incredible views of the La Concha mountain. This development is renowned for it's popularity with holiday makers and makes a sound investment, whether it's for a holiday home or for holiday rentals, the development has always been popular with property investors. The apartment has two bedrooms, one bedroom on-suite and a family bathroom. Both bedrooms come with fitted wardrobes. There is a fully fitted kitchen with a utility room. The apartment comes with air conditioning, hot and cold, underground parking and the terrace has glass curtains, allowing you to use the terrace throughout the winter months. There are padel courts for private use and two large swimming pools, both with beach entry making it easier for young children. The development is gated, comes with an on site restaurant and 24HR security. Stunning large gardens completes this ever popular development, and all situated within a short walk to the best beaches and Puerto Banus. For golf fans, there is a golf course directly behind the development. Keys held in office and viewings can be arranged at short notice. Viewing is highly recommended! THIS PROPERTY HAS AN LPO LICENSE VFT LICENSES ARE NOT ISSUED FOR THIS DEVELOPMENT

Covered Terrace
Fitted Wardrobes
Near Transport
Tennis Court

Covered Terrace
Lift
Paddle Tennis
Utility Room

Double Glazing
Marble Flooring
Private Terrace