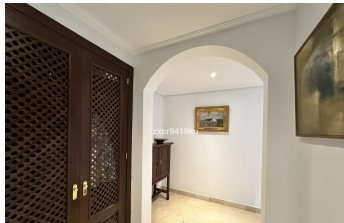


# ALL IN real estates



## Ground Floor Apartment in La Mairena

Bedrooms **2** Bathrooms **2** Built **171m2** Terrace **30m2**

**R4686574**

**Ground Floor  
Apartment**

**La Mairena**

**395.000€**

Stunning South-Facing Garden Apartment in La Mairena. Nestled within the picturesque landscape of La Mairena, this exquisite south-facing garden apartment offers a serene retreat surrounded by natural beauty. With its optimal orientation, you will indulge in abundant sunlight and breathtaking views throughout the day. Residents enjoy complimentary access to the superb El Soto leisure facilities, 9-Hole golf course, gym, spa, sauna, jacuzzi, paddle and tennis court and the wonderful restaurant on site which is a great meeting place for food and drinks. Underground secure parking and 12sqm storage room, This is one of the few south facing properties in the urbanisation, viewing is highly recommended.

Access for people with reduced mobility

Covered Terrace

Ensuite Bathroom

Gym

Access for people with reduced mobility

Domotics

Fiber Optic

Jacuzzi

Bar

Double Glazing

Fitted Wardrobes

Lift

Marble Flooring  
Restaurant On Site  
Tennis Court

Paddle Tennis  
Sauna  
Utility Room

Private Terrace  
Storage Room  
WiFi