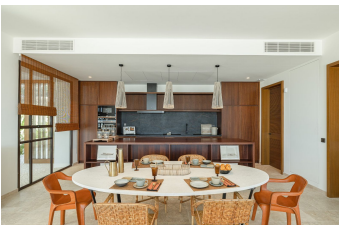


ALL IN

real estates



House in Casares

Bedrooms **3**

Bathrooms **3**

Built **395m2**

Plot **2194m2**

R4578286

House

Casares

3.950.000€

The panoramic villa is embedded in the exclusive golfing community of Finca Cortesin, surrounded by the Mediterranean nature, overlooking the mesmerizing Costa del Sol and the sea. This brand new 3-bedroom villa is equipped with modern and functional furniture which is included in the sales price. The entrance level with carport and stairways lead down to the villa through a beautiful garden area. The panoramic villa is located on a ground level facing south with a spacious sun terrace and 13 m wide infinity pool, with spectacular views of the 5-star golf course of Finca Cortesin and the Mediterranean coast. The property is built on one level, while the garden is distributed over three levels. In the first garden area there is a BBQ and dining area with an outdoor kitchen. In the lowest level there is a spacious kitchen garden with many tropical trees and plants, including fig, mango, lemon, lime, pomegranate and banana trees. The villa is brand new and ready to move into. Comprising of open plan living spaces, with a stunning fully fitted modern kitchen with central isle, a dining area and continuing into the sitting area that enjoys panoramic views over the golf. The living area opens onto a partially covered terrace area, with the infinity swimming pool with views down to the Mediterranean Sea. 3 large bedrooms all with en-suite bathrooms. Each bedroom with large picture windows opening onto terrace. The bathrooms are equipped with a free standing bathtub and or a spacious shower, as well as having 2 washbasins each, offering total relaxation. Set within the highly sought after 5-star golf resort of Finca Cortesin, surrounded

by modern villas, golf courses and luxury services. A short drive to the beaches in the area of Casares, close to Estepona town and the exclusive town of Sotogrande in the opposite direction.

Covered Terrace
Ensuite Bathroom
Near Transport

Covered Terrace
Fitted Wardrobes
Private Terrace

Double Glazing
Marble Flooring