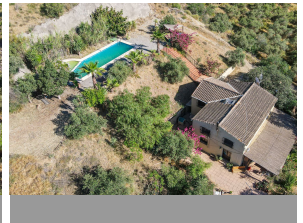
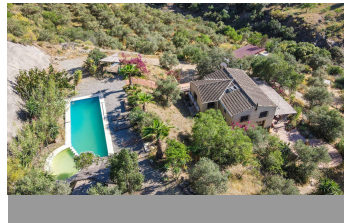
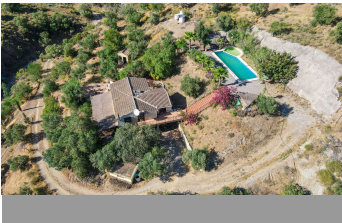


ALL IN

real estates



House in Pizarra

Bedrooms **14** Bathrooms **7** Built **624m2** Plot **72000m2**

R4362826 **House** **Pizarra** **1.550.000€**

Extraordinary Rustic Retreat Center with Endless Possibilities A truly remarkable rustic retreat center nestled in the breathtaking Gibralmora hills. This haven of tranquility, situated on semi-protected land, has been captivating guests for the past 16 years. As you arrive, you'll feel instantly transported to a world far away from the hustle and bustle, surrounded by rolling hills and only one neighbor in sight. Conveniently located just a short 11-minute drive from Aljaima train station and a mere 20 minutes from the vibrant city of Malaga, you'll have easy access to its renowned attractions, including the awe-inspiring Alcazaba castle, Picasso museum, fabulous shopping destinations, and delightful tapas bars. For beach enthusiasts, the nearest sandy shores are a scenic 40-minute drive away, as well as the Malaga International Airport. For nature enthusiasts, the famous El Chorro gorge and Ardales lakes await in the other direction. The exhilarating Kings Walk, Spain's top tourist attraction, promises unforgettable adventures amidst stunning natural landscapes. Spanning across 18 acres of land, this extraordinary property comprises two charming fincas, each with its own distinct character and purpose. El Romero, the hub of the retreat center, provides a serene sanctuary for guests. Meanwhile, Finca Verde, the family house, serves as the nerve center of the retreat. El Romero is often rented out as a holiday rental home, catering to various wellness activities such as yoga, pilates, tai chi, as well as family events and special occasions. Designed with the utmost care, Finca El Romero is nestled within an

enchanted almond grove, while Finca Verde is surrounded by approximately 100 olive trees that yield exquisite organic olive oil. The property boasts three separate escrituras (land deeds). The first escritura encompasses the retreat center, studio, and spa facilities, spanning an expansive 35,000m². The second escritura comprises 25,000m² of land, and the third escritura includes the family house, a second pool, pool bar, yoga platform, and reservoir. Water sources are abundant, with two main wells on the land, an old traditional well, and a hunters spring set within a cave. Additionally, a 580,000-liter reservoir sits adjacent to the yoga platform. There is also the possibility to connect to town water, as some neighboring properties have done. During the summer months, an embalse water cleaning system ensures a sustainable water supply. Both houses benefit from 3-phase electricity, which currently operates on a single bill but can be easily divided if needed. Solar panels have been installed to minimize electricity costs, generating a substantial amount of power to cover daily usage.

- The Family House: Situated on a 30,000m² plot of land, this 200m² property boasts a beautiful garden terrace and a captivating swimming pool measuring 4.5m x 10.5m. The pool can be accessed from the house below or via a bridge from the master bedroom, offering a unique and luxurious experience. Air conditioning provides optimal comfort in all bedrooms and the lounge area. The ground floor features an open-plan lounge and kitchen area, measuring 4m x 10.5m, surrounded by a spacious patio. Additional highlights include an office/bedroom, a hallway with a wooden staircase leading to the upper floor, a spare bedroom with access to the lower terrace, and a well-appointed bathroom/shower room. Natural smooth grey slate flooring adds a touch of elegance to the entire ground floor. The upper floor boasts a large wooden circulation space with a Velux window above. The rooms are designed in the style of an old finca, featuring wooden floors throughout, vaulted wooden ceilings, and low windows. The expansive master bedroom measures 7m x 5m and can be divided into two smaller rooms if desired. The third bedroom offers a serene retreat with a large deep bath, stunning views, and bespoke wooden fitted wardrobes. The final bedroom features large windows on all three sides, providing ample natural light. A convenient toilet and shower room complete the upper floor. Additional features of the property include two outhouses, approximately 3.5m x 3m and 3m x 3m in size, currently utilized as storage and a gym/extra bedroom/music room. A lower terrace below the house houses a large cabin structure measuring 150m², ideal for storage, and equipped with two bedrooms, a bathroom, and a kitchen/living room for staff or volunteers. A septic tank is also located on the lower level, catering to the house and cabin.

- The Retreat Center: This stunning 150-year-old finca has been lovingly restored, preserving its authentic charm with antique tiles and original features. The eastern courtyard has been transformed into a spacious, daylight studio measuring 8m x 10m, boasting glass doors that open along one side. This versatile space serves as a hub for art retreats, functions, conferences, winter dinners, and workshops. Hot Yoga groups particularly appreciate the two super infrared heaters, which instantly heat the studio to temperatures of up to 50 degrees. El Romero offers seven charming bedrooms, all adorned with air conditioning for maximum comfort. The ground floor features two traditional-style bedrooms, including an additional bedroom accessed from the outside seating area. The large and inviting lounge, characterized by wooden beams, houses a glass-fronted wood burner and provides access to the generously sized kitchen, capable of catering to groups of over 25 people. Charming original bathrooms can be found within the house, with an additional bathroom situated across the courtyard. Upstairs, four bedrooms with white wooden vaulted ceilings await, with the largest bedroom offering access to a terrace overlooking the pool and hills. A vast covered terrace measuring 5m x 20m graces the south-facing front of the house, serving as the perfect setting for meals and socializing. To the eastern side, a curved sofa spans 17m, creating an idyllic space for weddings and talks. Steps from this area lead to the lush oasis garden, where relaxation

areas surround a magnificent 5m x 8m pool adorned with a black slate surround. The pool area features additional amenities, including a mosaic-tiled Haman-style steam room measuring 3m x 3m, seating 16 people, and a cave sauna complete with speakers. A large decked area with an adjacent shower serves as a tranquil space, often utilized for small yoga classes. Shade sails and 3m-high poles provide relief during the warmer months, while a 3m x 4m screen can be projected for swim-in cinema experiences. Adjacent to the pool, a 6m x 3.5m bathroom block offers tastefully designed units comprising a full bathroom, a shower room, and a separate toilet room. The pool, measuring 8m x 5m, comes with a cover, roller, and shower. A pipe system is available for heating the pool during the early and late months of the year. Two delightful wooden-covered areas add to the charm, one featuring railway sleeper-designed seats, while the other offers a cozy bed nestled beneath a grapevine, perfect for indulging in siestas. As you wander further along the pool area, you'll find a path leading to the remarkable Yoga platform. Measuring an impressive 9m x 13m, this wooden platform boasts bamboo shading and represents an original and grand design.

Option to buy the retreat without the house next to it for € 1.375.000.

Barbeque
Double Glazing
Guest Apartment
Storage Room
Wood Flooring

Barbeque
Ensuite Bathroom
Guest House
Utility Room

Covered Terrace
Fitted Wardrobes
Private Terrace
WiFi